

Le Grand-Bornand / Flumet

Route des Grandes Alpes Gravel



Départ
Le Grand-Bornand

Arrivée
Flumet

Durée
4 h 30 min

Distance
41,65 Km

Niveau
Difficult

This stage takes you across the Massif des Aravis Range and its two village-resorts, Le Grand-Bornand and La Clusaz, before making you plunge down into the Val d'Arly, on the border between the two départements (French counties) of Haute-Savoie and Savoie. First, climbing a portion of the Vallée du Bouchet from Le Grand-Bornand village, enjoy the lovely hilly, up-and-down route to the Vallée des Confins and its little lake, at the foot of the typical coombs (steep dry valleys) of the Aravis Range. From here, continue on to La Clusaz, then follow the road up to the Col des Aravis (a pass at an altitude of 1,486m). In the midst of the array of chalet-restaurants at the pass, turn right onto the Route de la Soif, a splendid road perched on high, providing easy cycling and preceding a splendid wild descent to Saint-Nicolas-la-Chapelle, followed by Flumet.

Details of the stage :

↗ 1560 m ↘ 1590 m
High/low point : 1711 m / 862 m
Max gradient 14 %

Passage points

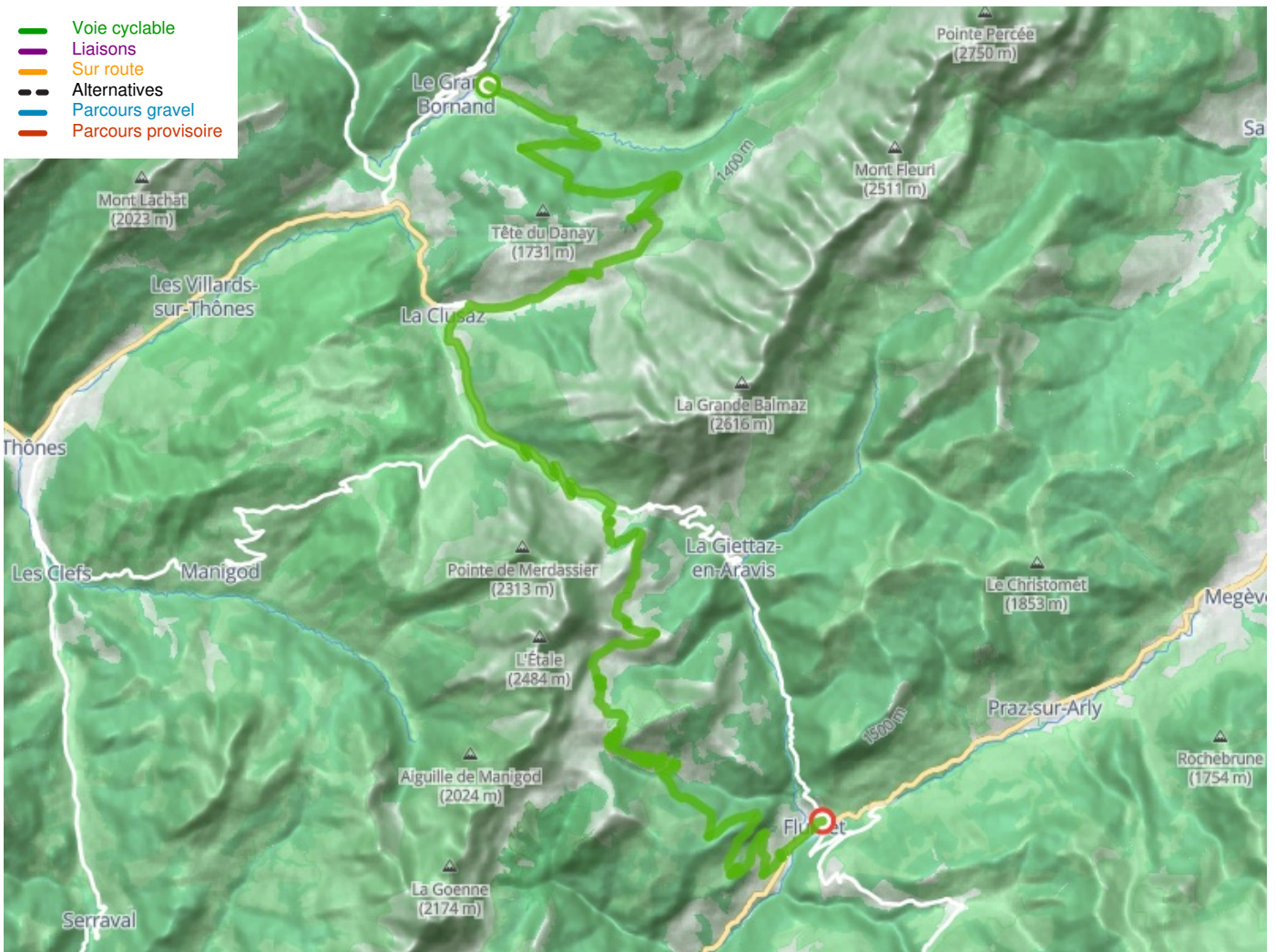
LE GRAND-BORNAND > Route de la Vallée du Bouchet > La Loy > Route des Frasses Jacquiers > COL DES CONFINS > Route des Confins > Le Fernuy > LA CLUSAZ > D909 > COL DES ARAVIS > Route de la Soif > Psamo > Chemin des Montagnes > Les Rosets > Chez Collet > Les Combes > SAINT-NICOLAS-LA-CHAPELLE > FLUMET.

Don't miss

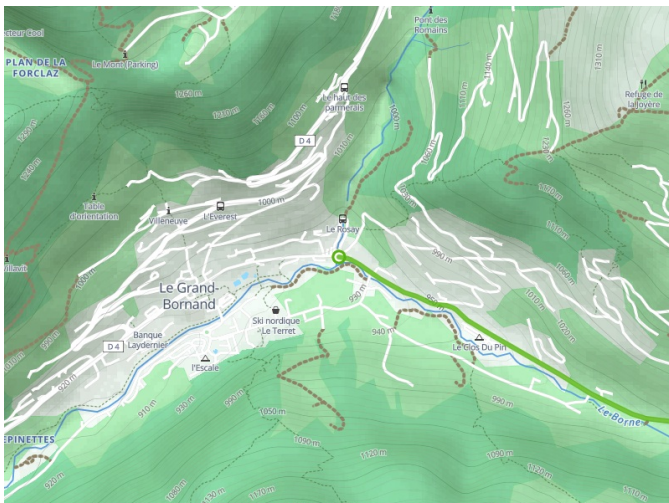
- **The Massif des Aravis** : A wall of a mountain range distinguished by its sharp toothy summits, the Massif des Aravis, for French people, conjures up images of typical Alpine villages, high Alpine meadows... and Reblochon cheese, made from the milk of the cows that graze here in summer. After crossing the Col de la Colombière, follow the Route des Grandes Alpes plunging down into the heart of the area's magical landscapes, passing via the famed village-resorts of Le Grand-Bornand and La Clusaz, then the Col des Aravis, a pass providing picture-postcard views.
- **La Clusaz** : The mountain resort of La Clusaz, which has chosen the ram as its symbol, offers a whole range of tough outdoor activities in summer, such as mountain-biking and rock-climbing, as well as a water sports centre, plus hiking paths. The village itself is lovely, lively and very likeable, the houses and shops clustered around the Baroque church marked by its onion-bulb-shaped belfry. Located at the foot of the Col des Aravis, the road to that famed pass crossing the village, the place is well worth stopping at.
- **Col des Aravis** : From La Clusaz, the climb to this pass presents a pretty regular 6% to 7% gradient. Shortly after passing Les Converses, you'll see fewer and fewer buildings and will focus on the impressive series of six hairpin bends helping you up the enormous natural embankment between L'Adroit side (to your left) and l'Envers side (to the right) of the Aravis heights. The natural setting is utterly beautiful. As the final 400m are at a mere 3% gradient, that'll help you arrive at the pass itself with a flourish! At the top, you'll be spoilt for choice of places to eat and find refreshments, enjoying a splendid view of Mont Blanc.
- **The Val d'Arly** : The Val d'Arly, its natural frontiers

formed by the Gorges de l'Arly, the Chaîne des Aravis, the Pays du Mont-Blanc and the Col des Saisies, consists of medium-sized mountains. The area is unspoilt and charming, and has kept its authentic character. Its six villages have developed a remarkably joined-up economy based around agriculture and tourism. Discover the four characterful village-resorts here, La Giettaz-en-Aravis, Flumet / Saint Nicolas La Chapelle, Notre Dame de Bellecombe and Crest-Voland Cohennoz, all benefiting from magnificent mountain settings.

- Voie cyclable
- Liaisons
- Sur route
- Alternatives
- Parcours gravel
- Parcours provisoire



Départ
Le Grand-Bornand



Arrivée
Flumet

